

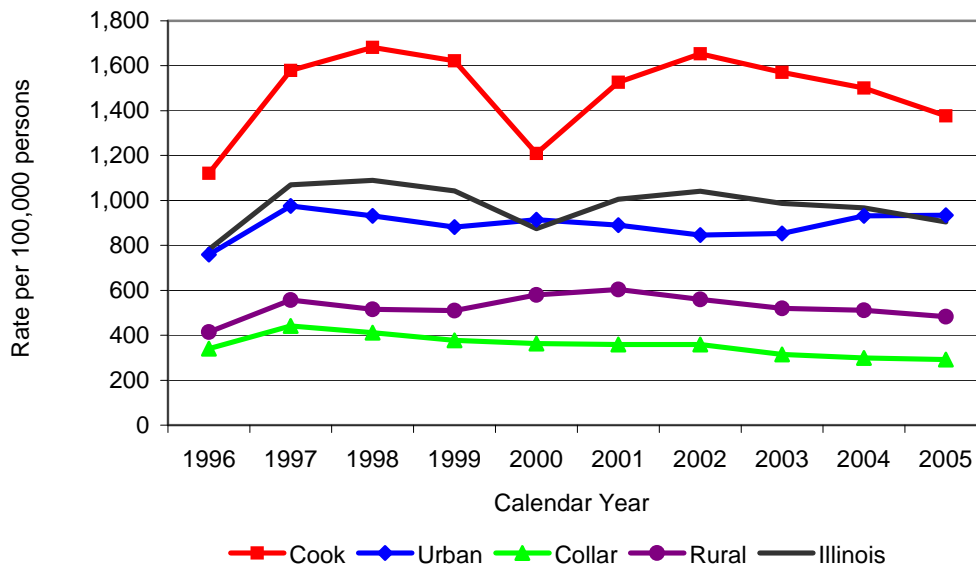
Data summary

Social context

The data elements examined in this section describe the social setting in which youth live, including numbers of reported domestic offense incidents, reported and indicated cases of child abuse and neglect, reported and indicated cases of sexual abuse, reported crimes against children, and the number of Illinois Department of Corrections inmates with children

Domestic violence

Figure 2
Rate of reported domestic offense incidents per 100,000 persons
in the general population by county classification, 1996 – 2005



Source: Illinois State Police

Domestic offense incidents are reported by local police departments to the Illinois State Police (ISP) as a part of the **Illinois Uniform Crime Reporting (I-UCR) supplemental reporting program**. In 2005, 115,411 domestic offense incidents were reported to the I-UCR supplemental reporting program, an increase of 6 percent from the 108,792 incidents reported in 2000. However, a steady decrease has occurred in the number of incidents reported since 2002. *Figure 2* depicts the rate of reported domestic offense incidents by county classification from 1996 through 2005. Data prior to 1996 were unavailable.

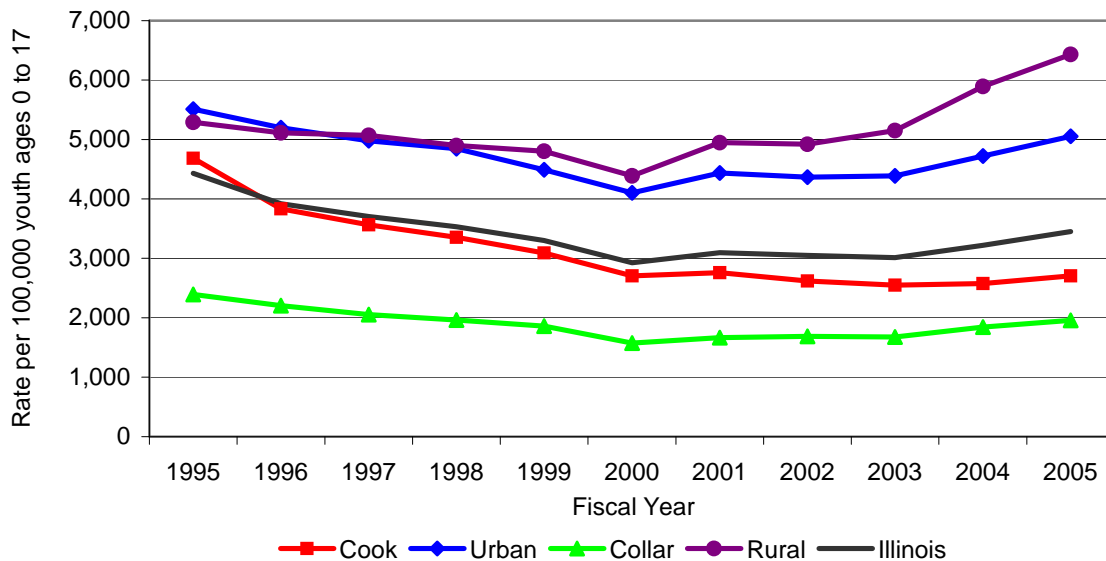
In 2005, the state rate of reported domestic violence incidents was 905 reports per 100,000 persons in the general population. Rates of domestic incidents were much higher in certain counties than in Illinois as a whole. This might be explained by under-reporting of domestic

offense incidents. The high rates may be due to some jurisdictions being more likely than others to report domestic offenses to ISP.

In 2000, a dip is seen in the rate of reported domestic violence offenses in Cook County. This is due to software issues at the Chicago Police Department.

Abuse and neglect

Figure 3
Rate of reported cases of child abuse and neglect per 100,000 youth ages 0 to 17 by county classification, FY95- FY05



Source: Illinois Department of Children and Family Services

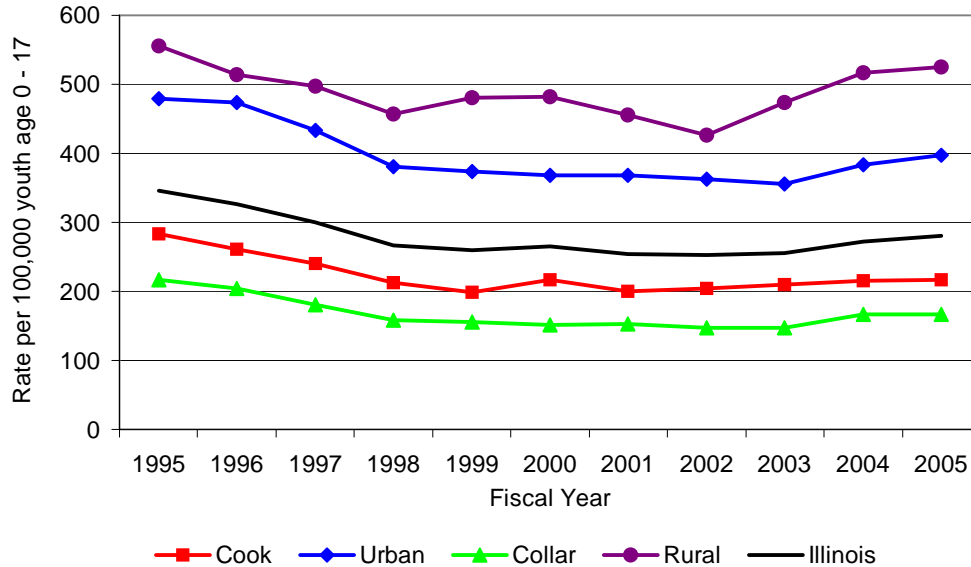
Research has determined that **abused and neglected children** have delinquency rates 47 percent higher than children who are not abused or neglected.¹² In FY05, there were 111,830 **child abuse and neglect reports** to the Department of Children and Family Services (DCFS), an increase of 18 percent from the 95,958 cases reported in FY00.

An 18 percent increase was seen in the rate of child abuse and neglect reports, from 2,924 per 100,000 youth ages 10 to 17 in FY00 to 3,453 per 100,000 youth ages 10 to 17 in FY05. *Figure 3* shows the rate of reports of child abuse and neglect by county classification from FY95 to FY05.

In FY05, DCFS **indicated** 25 percent of the reported cases of child abuse and neglect in the state. Indicated cases are those that DCFS has confirmed credible evidence of child abuse and neglect. That year, 27,575 cases of abuse and neglect were indicated, an increase of 1.4 percent from the 27,189 cases indicated in FY00. In FY05, DCFS indicated a rate of 852 cases of abuse and neglect per 100,000 youth ages 0 to 17.

Sexual abuse

Figure 4
Rate of reported cases of child sex abuse per 100,000 youth
ages 0 to 17 by county classification, FY95- FY05



Source: Illinois Department of Children and Family Services

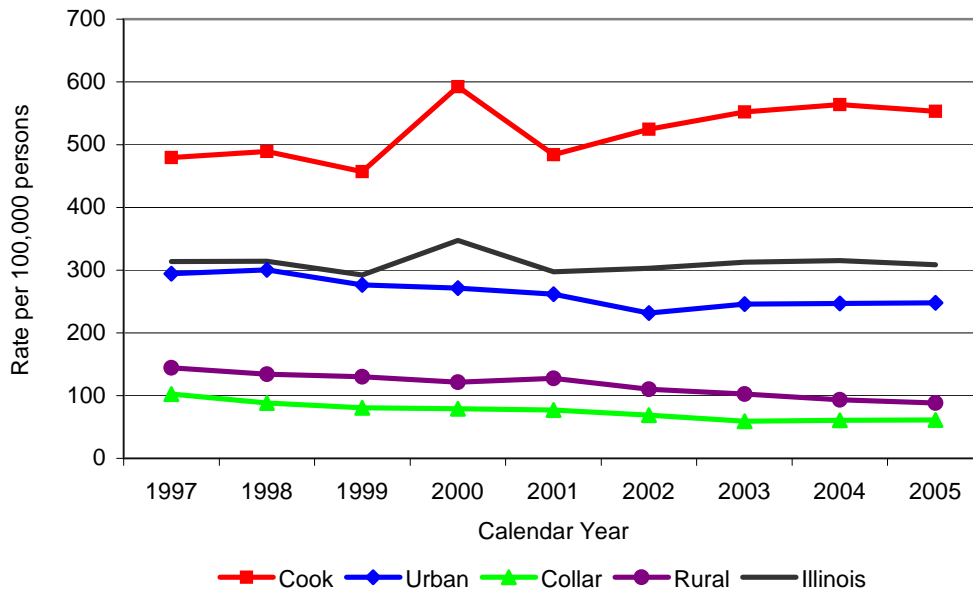
In FY05, 9,100 cases of sexual abuse of children in Illinois were reported to DCFS, a 6 percent increase from the 8,593 cases reported in 2000. From FY95 to FY05 a decrease was seen in the statewide rate of reports of child sexual abuse to DCFS, but there was a 6 percent increase in the rate of child sexual abuse reports between FY00 and FY05, from 265 per 100,000 youth ages 10 to 17 in FY00 to 281 per 100,000 youth ages 10 to 17 in FY05. The greatest increase in the rate of reports was from 253 per 100,000 youth ages 10 to 17 in FY02 to 281 in FY05. *Figure 4* shows the rate of reported sexual abuse of children by county classification from FY95 through FY05.

In FY05, 2,618 indicated cases of child sex abuse were recorded, a decrease of 23 percent from the 3,412 cases indicated in 2000. In FY05, DCFS indicated 29 percent of reported cases of child sex abuse. DCFS indicated child sexual abuse reports at a rate of 81 cases of child sex abuse per 100,000 youth ages 0 to 17 in FY05.

Crimes against youth

Reporting of criminal offenses against youth to ISP is voluntary. These numbers may therefore be an undercount of the frequency of crimes against youth. In 2005, 39,400 offenses against youth were reported to the I-UCR supplemental reporting program, a decrease of 9 percent from the 43,221 offenses reported in 2000.

Figure 5
Rate of reported crimes against youth per 100,000 persons by county classification, 1997-2005



Source: Illinois State Police

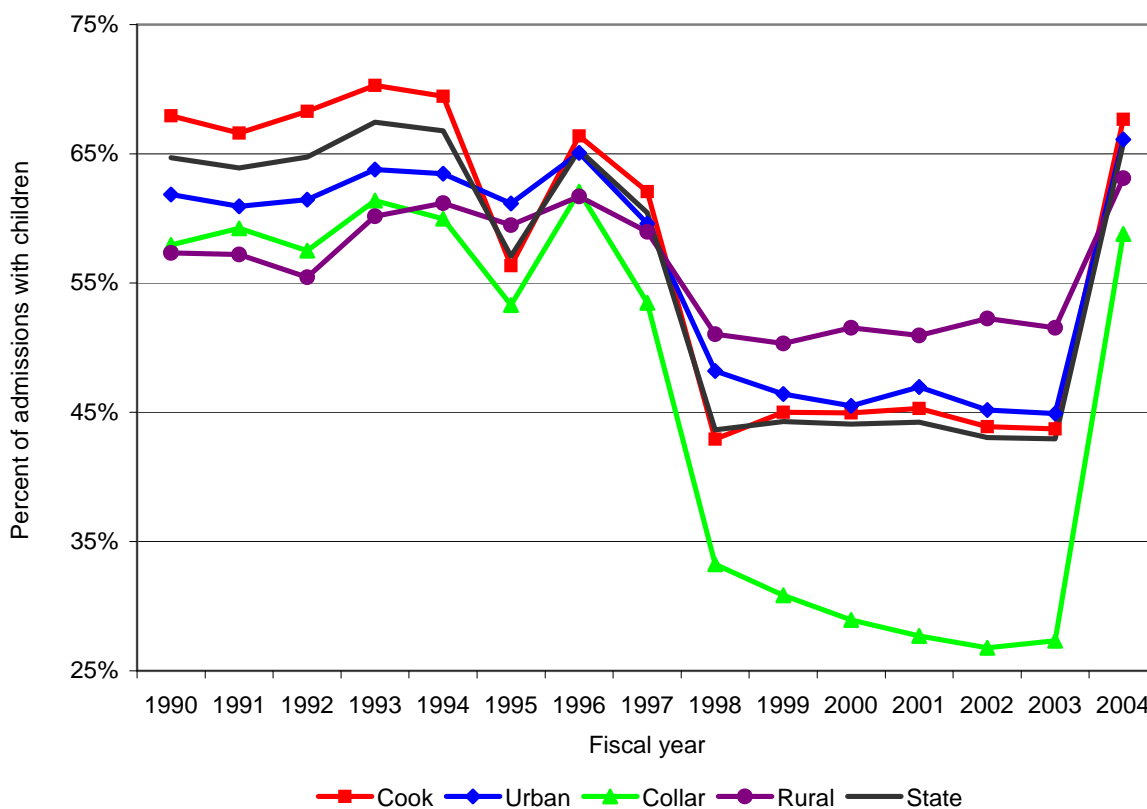
In 2005, there was a rate of 309 reported crimes against youth per 100,000 persons in the general population. This represents an 11 percent decrease in the rate of reported crimes against youth from 2000, when the rate was 347 per 100,000 persons. Sangamon County had a rate of reported offenses against youth that was more than two times the rate of the state as a whole. This may be a reflection of reporting practices in that county.

Figure 5 shows the reported crimes against youth rate by county classification for 1997 through 2005. Data prior to 1997 were unavailable.

Correctional inmates with children

In FY04, 24,951 adult inmates admitted to the Illinois Department of Corrections had children. This number represented 66 percent of the total inmate admission population. In FY00, there were 12,351 admitted inmates with children or 44 percent of the total inmate population. This represents an increase of more than 100 percent in the number of adult inmates with children from FY00 to FY04. Data for FY05 were unavailable.

Figure 6
Percent of inmates admitted to IDOC with children, FY90 - FY04



Source: Illinois Department of Corrections

As reported by IDOC, in FY98 about a 30 percent decrease was seen in the percentage of inmates with children, from 62 percent in FY97 to 43 percent in FY98. This decrease continued until FY04, when the percentages of correctional inmates with children increased to 68 percent. Collar counties experienced the greatest decreases, from 62 percent in FY96 to 33 percent in FY98, but the figures increased to 59 percent in FY04 (*Figure 6*). The increase may be attributed to changes in data collection and reporting practices at IDOC.

Appendix H: Data tables section

The following data tables include county-level detail for several dozen juvenile justice data elements. When available, some data elements were also broken down by demographics, such as age, race, and gender. Data is provided by calendar year, academic year, or Fiscal Year, depending upon the reporting agency. Whenever possible, both 1999 and 2004 data were included.

Many caveats have been mentioned throughout this report regarding the interpretation of the following data. The bullet points below describe additional issues that should be considered when reviewing the data tables.

- If there is a blank space where data should be, then data were not available.
- When zero (0) is listed for a particular data element, there are two interpretations
 - There were zero instances of that particular event occurring.
 - Zero instances of that particular event were reported.

For instance: A zero appears for Greene County in the youth arrests table. This could be interpreted as Greene County not having any youth arrests for 2004, or that Greene County did not report any youth arrests to the Illinois State Police, but actually did arrest juveniles.

Whenever possible, rates were calculated by using the population most appropriate to the data element. For example, youth incarceration rates were calculated using the youth population 13-16 since a youth under the age of 13 cannot be incarcerated in an Illinois Youth Center, and youth 17 or older are considered adults in Illinois.

List of tables

Table 7: Number of reported domestic offense incidents, CY00 – CY05	131
Table 8: Number of reported cases of child abuse and neglect, FY00 – FY05	133
Table 9: Number of indicated cases of child abuse and neglect, FY00 – FY05	135
Table 10: Number of reported cases of child sex abuse, FY00 – FY05	137
Table 11: Number of indicated cases of child sex abuse, FY00 – FY05	139
Table 12: Number of reported crimes against youth, CY00 – CY05	141
Table 13: Number of inmates admitted to IDOC with children, FY00 – FY04	143

Table 7: Number of reported domestic offense incidents, CY00 – CY05

Source: Illinois State Police

Rate per 100,000 Persons in the General Population

County	2000	Rate	2005	Rate	Rank
Adams	638	935	423	631	23
Alexander	51	532	43	482	32
Bond	6	34	12	67	84
Boone	209	497	187	370	41
Brown	0	0	0	0	90
Bureau	151	425	50	142	76
Calhoun	0	0	0	0	90
Carroll	112	674	50	311	49
Cass	21	153	19	137	77
Champaign	3,501	1,947	3,639	1,968	3
Christian	110	311	91	259	55
Clark	21	124	31	183	68
Clay	25	172	35	248	58
Clinton	83	233	176	488	31
Coles	302	569	243	476	33
Cook	65,008	1,209	72,937	1,376	9
Crawford	262	1,284	281	1,412	8
Cumberland	29	257	32	292	52
DeKalb	693	776	287	294	51
DeWitt	1	6	1	6	89
Douglas	67	336	80	401	38
DuPage	2,498	275	2,390	257	56
Edgar	423	2,152	24	125	78
Edwards	0	0	5	74	82
Effingham	187	546	204	590	24
Fayette	251	1,151	191	880	15
Ford	36	253	45	318	47
Franklin	118	302	90	227	60
Fulton	117	306	55	146	75
Gallatin	2	31	3	49	86
Greene	46	312	63	432	37
Grundy	284	754	278	634	21
Hamilton	0	0	0	0	90
Hancock	37	184	7	37	87
Hardin	0	0	0	0	90
Henderson	0	0	0	0	90
Henry	253	496	486	961	14
Iroquois	31	99	57	186	66
Jackson	188	316	129	223	61
Jasper	11	109	25	250	57
Jefferson	107	267	89	220	62
Jersey	141	651	87	387	39
Jo Daviess	63	283	39	173	70
Johnson	0	0	0	0	90
Kane	1,754	430	1,545	320	45
Kankakee	725	698	727	673	20
Kendall	315	571	269	338	44
Knox	413	741	544	1,020	11
Lake	2,819	434	2,392	340	43
LaSalle	503	451	535	475	34
Lawrence	98	636	89	559	26

Table 7: Number of reported domestic offense incidents, CY00 – CY05

County	2000	Rate	2005	Rate	Rank
Lee	142	394	111	311	49
Livingston	382	963	589	1,503	7
Logan	860	2,760	677	2,212	2
McDonough	114	347	86	269	54
McHenry	577	220	558	184	67
McLean	523	347	1,105	695	19
Macon	2,230	1,948	2,072	1,881	4
Macoupin	208	424	173	352	42
Madison	3,655	1,411	2,560	969	12
Marion	96	230	128	319	46
Marshall	48	365	40	303	50
Mason	92	574	82	521	29
Massac	121	800	113	736	18
Menard	32	256	36	283	53
Mercer	32	189	27	160	73
Monroe	41	148	26	84	81
Montgomery	146	476	139	457	35
Morgan	232	634	178	498	30
Moultrie	43	300	54	372	40
Ogle	314	614	242	446	36
Peoria	3,810	2,080	2,831	1,553	6
Perry	34	147	38	167	72
Piatt	66	403	93	558	27
Pike	15	86	21	123	79
Pope	24	543	8	190	65
Pulaski	33	451	1	15	88
Putnam	1	16	0	0	90
Randolph	49	144	66	199	64
Richland	51	316	24	152	74
Rock Island	1,584	1,062	1,294	875	16
St. Clair	1,422	555	1,366	525	28
Saline	407	1,527	193	740	17
Sangamon	2,003	1,059	4,942	2,563	1
Schuyler	23	320	15	212	63
Scott	0	0	0	0	90
Shelby	47	206	38	170	71
Stark	33	522	21	340	43
Stephenson	982	2,008	896	1,868	5
Tazewell	1,172	912	1,257	967	13
Union	19	104	19	104	80
Vermilion	649	774	1,031	1,252	10
Wabash	15	116	0	0	90
Warren	129	690	98	558	27
Washington	2	13	9	60	85
Wayne	76	444	29	173	70
White	44	287	37	242	59
Whiteside	367	605	379	633	22
Will	2,268	446	2,030	316	48
Williamson	640	1,045	357	561	25
Winnebago	154	55	210	73	83
Woodford	75	211	67	179	69
Total	108,792	875	115,411	904	

Table 8: Number of reported cases of child abuse and neglect, FY00 – FY05

Source: Illinois Department of Children and Family Services

Rate per 100,000 Youth Age 0-17

County	2000	Rate	2005	Rate	Rank
Adams	834	4,915	1,182	7,463	12
Alexander	143	5,804	215	9,417	2
Bond	155	4,042	256	7,039	25
Boone	264	2,107	378	2,870	93
Brown	55	4,493	78	7,078	23
Bureau	201	2,293	410	5,005	62
Calhoun	47	4,055	45	4,286	77
Carroll	163	4,064	185	5,091	61
Cass	127	3,695	218	6,457	33
Champaign	1,612	4,243	2,027	5,362	56
Christian	312	3,688	577	7,122	19
Clark	150	3,565	236	5,984	49
Clay	141	4,070	243	7,357	15
Clinton	176	2,000	301	3,667	84
Coles	554	5,322	736	7,440	14
Cook	37,721	2,704	37,221	2,706	94
Crawford	175	3,778	254	6,079	40
Cumberland	108	3,646	120	4,474	71
DeKalb	570	2,766	736	3,504	88
DeWitt	228	5,553	294	7,521	11
Douglas	162	3,027	188	3,646	85
DuPage	2,470	1,021	3,408	1,423	101
Edgar	192	4,133	303	7,118	20
Edwards	52	3,279	98	6,703	29
Effingham	259	2,661	401	4,414	76
Fayette	171	3,323	296	6,113	39
Ford	112	3,071	211	6,137	38
Franklin	586	6,576	885	10,130	1
Fulton	393	4,702	481	6,113	39
Gallatin	92	6,493	92	7,148	17
Greene	180	4,828	202	5,982	50
Grundy	199	1,990	328	3,299	91
Hamilton	91	4,452	123	6,688	30
Hancock	178	3,630	194	4,429	74
Hardin	42	4,334	71	7,978	10
Henderson	32	1,700	66	4,000	80
Henry	419	3,251	676	5,769	52
Iroquois	240	3,021	349	4,814	65
Jackson	641	5,589	757	6,909	27
Jasper	78	3,017	91	3,957	81
Jefferson	464	4,792	665	7,133	18
Jersey	180	3,293	177	3,489	89
JoDaviess	132	2,575	213	4,416	75
Johnson	90	3,820	166	7,094	22
Kane	2,645	2,140	3,295	2,367	95
Kankakee	1,046	3,717	1,267	4,504	70
Kendall	219	1,348	388	1,971	100
Knox	770	6,254	829	7,113	21
Lake	3,283	1,720	4,222	2,142	97
LaSalle	1,298	4,641	1,688	6,299	35
Lawrence	160	4,606	244	7,441	13
Lee	343	3,942	400	4,966	64

Table 8: Number of reported cases of child abuse and neglect, FY00 – FY05

County	2000	Rate	2005	Rate	Rank
Livingston	632	6,395	584	6,281	37
Logan	319	4,703	385	6,037	43
McDonough	212	3,655	279	5,266	57
McHenry	1,532	1,944	1,887	2,273	96
McLean	1,595	4,490	1,738	4,785	66
Macon	1,259	4,453	1,460	5,443	55
Macoupin	500	4,160	654	5,901	51
Madison	2,895	4,491	3,259	5,179	58
Marion	728	6,852	896	9,062	3
Marshall	100	3,239	106	3,603	86
Mason	171	4,420	296	8,127	9
Massac	182	5,221	236	6,770	28
Menard	104	3,149	138	4,562	69
Mercer	101	2,413	137	3,546	87
Monroe	100	1,367	154	2,125	98
Montgomery	296	4,092	426	6,290	36
Morgan	445	5,330	565	7,201	16
Moultrie	108	2,945	143	4,126	79
Ogle	410	2,919	518	3,869	82
Peoria	2,428	5,238	2,609	5,695	53
Perry	243	4,798	289	6,013	46
Piatt	98	2,392	114	3,051	92
Pike	153	3,680	245	6,400	34
Pope	36	3,810	37	4,666	67
Pulaski	111	5,589	119	6,503	32
Putnam	31	2,039	52	3,693	83
Randolph	297	3,966	433	6,077	41
Richland	220	5,599	316	8,720	6
Rock Island	1,919	5,381	2,086	6,028	44
St. Clair	2,802	3,949	3,062	4,471	72
Saline	326	5,116	538	8,744	5
Sangamon	2,440	5,157	3,048	6,575	31
Schuyler	94	5,739	77	5,161	59
Scott	40	2,884	64	5,108	60
Shelby	165	2,907	239	4,663	68
Stark	43	2,739	86	6,018	45
Stephenson	502	4,046	689	5,990	48
Tazewell	951	3,049	1,324	4,431	73
Union	158	3,759	347	8,677	7
Vermilion	1,253	5,979	1,662	8,211	8
Wabash	132	4,231	199	7,052	24
Warren	192	4,429	268	6,927	26
Washington	83	2,172	146	4,192	78
Wayne	132	3,271	193	4,977	63
White	118	3,586	186	6,010	47
Whiteside	636	4,196	865	6,048	42
Will	2,481	1,626	3,478	2,004	99
Williamson	704	5,027	1,232	8,858	4
Winnebago	3,298	4,458	4,129	5,584	54
Woodford	218	2,308	316	3,484	90
Unknown/out-of-state			1,035		
Total	94,948	2,924	111,830	3,454	

Table 9: Number of indicated cases of child abuse and neglect, FY00 - FY05

Source: Illinois Department of Children and Family Services

Rate per 100,000 Youth Age 0-17

County	2000	Rate	2005	Rate	Rank
Adams	294	1,732	436	2,753	6
Alexander	39	1,583	15	657	7
Bond	54	1,408	78	2,145	24
Boone	64	511	82	623	25
Brown	5	408	25	2,269	16
Bureau	60	684	96	1,172	17
Calhoun	15	1,294	10	952	18
Carroll	100	2,493	45	1,238	19
Cass	21	611	83	2,459	11
Champaign	644	1,695	504	1,333	12
Christian	75	886	171	2,111	25
Clark	48	1,141	85	2,155	23
Clay	51	1,472	82	2,483	9
Clinton	82	932	76	926	10
Coles	110	1,057	224	2,264	17
Cook	7,853	563	7,828	569	18
Crawford	76	1,641	91	2,178	21
Cumberland	19	641	41	1,529	22
DeKalb	130	631	125	595	23
DeWitt	104	2,533	49	1,254	24
Douglas	47	878	30	582	25
DuPage	492	203	638	266	26
Edgar	53	1,141	99	2,326	13
Edwards	25	1,576	40	2,736	7
Effingham	83	853	121	1,332	8
Fayette	59	1,147	68	1,404	9
Ford	34	932	58	1,687	40
Franklin	189	2,121	203	2,324	14
Fulton	142	1,699	107	1,360	15
Gallatin	42	2,964	28	2,176	22
Greene	55	1,475	65	1,925	28
Grundy	30	300	45	453	29
Hamilton	42	2,055	48	2,610	8
Hancock	74	1,509	58	1,324	9
Hardin	6	619	16	1,798	34
Henderson	19	1,010	12	727	35
Henry	150	1,164	207	1,767	37
Iroquois	62	780	120	1,655	41
Jackson	203	1,770	195	1,780	35
Jasper	34	1,315	20	870	36
Jefferson	145	1,498	230	2,467	10
Jersey	63	1,153	41	808	11
JoDaviess	53	1,034	76	1,576	12
Johnson	19	806	28	1,197	13
Kane	982	795	654	470	14
Kankakee	469	1,667	313	1,113	15
Kendall	63	388	58	295	16
Knox	365	2,964	259	2,222	19
Lake	1,013	531	1,329	674	20
LaSalle	513	1,834	482	1,799	33
Lawrence	62	1,785	95	2,897	4
Lee	182	2,092	117	1,453	5

Table 9: Number of indicated cases of child abuse and neglect, FY00 - FY05

County	2000	Rate	2005	Rate	Rank
Livingston	237	2,398	158	1,699	39
Logan	99	1,460	98	1,537	40
McDonough	90	1,552	71	1,340	37
McHenry	481	610	553	666	38
McLean	752	2,117	598	1,646	42
Macon	280	990	308	1,148	41
Macoupin	133	1,107	173	1,561	42
Madison	1,050	1,629	730	1,160	43
Marion	363	3,417	322	3,257	2
Marshall	15	486	27	918	3
Mason	40	1,034	102	2,801	5
Massac	40	1,147	62	1,779	36
Menard	21	636	37	1,223	43
Mercer	19	454	34	880	44
Monroe	39	533	44	607	45
Montgomery	77	1,065	104	1,536	46
Morgan	107	1,282	160	2,039	27
Moultrie	30	818	30	866	28
Ogle	120	854	148	1,105	29
Peoria	970	2,093	693	1,513	30
Perry	57	1,125	75	1,561	45
Piatt	19	464	25	669	46
Pike	34	818	63	1,646	42
Pope	12	1,270	5	631	43
Pulaski	36	1,813	23	1,257	44
Putnam	0	0	19	1,349	45
Randolph	94	1,255	131	1,839	32
Richland	102	2,596	121	3,339	1
Rock Island	725	2,033	655	1,893	30
St. Clair	1,086	1,531	718	1,048	35
Saline	124	1,946	189	3,072	3
Sangamon	785	1,659	863	1,862	31
Schuyler	20	1,221	19	1,273	32
Scott	8	577	18	1,437	33
Shelby	38	670	82	1,600	34
Stark	6	382	17	1,190	36
Stephenson	169	1,362	160	1,391	37
Tazewell	417	1,337	385	1,288	38
Union	22	523	97	2,426	12
Vermilion	359	1,713	458	2,263	18
Wabash	54	1,731	40	1,417	19
Warren	75	1,730	80	2,068	26
Washington	39	1,020	47	1,349	57
Wayne	47	1,165	58	1,496	58
White	38	1,155	68	2,197	20
Whiteside	296	1,953	271	1,895	29
Will	671	440	569	328	30
Williamson	234	1,671	321	2,308	15
Winnebago	978	1,322	1,264	1,709	38
Woodford	67	709	81	893	39
Unknown/out-of-state			195		
Total	27,189	837	27,575	852	

Table 10: Number of reported cases of child sex abuse, FY00 – FY05

Source: Illinois Department of Children and Family Services

Rate per 100,000 Youth Age 0-17

County	2000	Rate	2005	Rate	Rank
Adams	67	395	75	474	45
Alexander	20	812	15	657	18
Bond	24	626	15	412	61
Boone	38	303	40	304	79
Brown	1	82	8	726	14
Bureau	30	342	41	500	41
Calhoun	3	259	8	762	12
Carroll	31	773	17	468	49
Cass	11	320	29	859	6
Champaign	134	353	145	384	69
Christian	35	414	49	605	27
Clark	10	238	22	558	32
Clay	17	491	37	1,120	2
Clinton	32	364	27	329	76
Coles	54	519	68	687	16
Cook	3,019	216	2,978	217	89
Crawford	27	583	13	311	78
Cumberland	14	473	10	373	70
DeKalb	41	199	62	295	80
DeWitt	21	511	25	640	22
Douglas	19	355	15	291	81
DuPage	238	98	302	126	94
Edgar	27	581	20	470	47
Edwards	9	567	17	1,163	1
Effingham	26	267	39	429	57
Fayette	28	544	24	496	43
Ford	7	192	22	640	22
Franklin	61	685	55	630	24
Fulton	43	514	35	445	54
Gallatin	7	494	6	466	50
Greene	16	429	20	592	28
Grundy	16	160	39	392	66
Hamilton	13	636	19	1,033	3
Hancock	13	265	24	548	34
Hardin	6	619	7	787	11
Henderson	12	638	4	242	86
Henry	51	396	58	495	44
Iroquois	23	289	33	455	52
Jackson	49	427	45	411	62
Jasper	10	387	12	522	39
Jefferson	62	640	44	472	46
Jersey	21	384	14	276	83
JoDaviess	11	215	31	643	21
Johnson	10	424	19	812	8
Kane	278	225	310	223	87
Kankakee	143	508	119	423	58
Kendall	24	148	43	218	88
Knox	75	609	63	541	36
Lake	390	204	360	183	91
LaSalle	124	443	104	388	68
Lawrence	17	489	17	518	40
Lee	33	379	47	583	30

Table 10: Number of reported cases of child sex abuse, FY00 – FY05

County	2000	Rate	2005	Rate	Rank
Livingston	73	739	54	581	31
Logan	45	663	26	408	63
McDonough	30	517	28	529	38
McHenry	97	123	133	160	93
McLean	117	329	126	347	73
Macon	92	325	126	470	47
Macoupin	66	549	45	406	64
Madison	253	392	282	448	53
Marion	89	838	64	647	20
Marshall	8	259	12	408	63
Mason	21	543	37	1,016	4
Massac	19	545	24	688	15
Menard	11	333	13	430	56
Mercer	21	502	14	362	72
Monroe	13	178	19	262	85
Montgomery	36	498	28	413	60
Morgan	37	443	51	650	19
Moultrie	15	409	12	346	74
Ogle	46	327	42	314	77
Peoria	216	466	198	432	55
Perry	21	415	32	666	17
Piatt	10	244	8	214	90
Pike	23	553	21	549	33
Pope	10	1,058	5	631	23
Pulaski	17	856	10	546	35
Putnam	8	526	4	284	82
Randolph	39	521	33	463	51
Richland	26	662	18	497	42
Rock Island	161	451	143	413	60
St. Clair	261	368	249	364	71
Saline	29	455	49	796	10
Sangamon	173	366	195	421	59
Schuyler	6	366	7	469	48
Scott	5	360	10	798	9
Shelby	16	282	14	273	84
Stark	9	573	13	910	5
Stephenson	30	242	60	522	39
Tazewell	84	269	100	335	75
Union	21	500	33	825	7
Vermilion	89	425	124	613	26
Wabash	20	641	15	532	37
Warren	23	531	11	284	82
Washington	5	131	13	373	70
Wayne	22	545	24	619	25
White	12	365	23	743	13
Whiteside	52	343	57	399	65
Will	191	125	286	165	92
Williamson	115	821	82	590	29
Winnebago	293	396	289	391	67
Woodford	26	275	39	430	56
Unknown/out-of-state			148		
Total	8,593	265	9,100	281	

Table 11: Number of indicated cases of child sex abuse, FY00 – FY05

Source: Illinois Department of Children and Family Services

Rate per 100,000 Youth Age 0-17

County	2000	Rate	2005	Rate	Rank
Adams	31	183	19	120	57
Alexander	4	162	2	88	67
Bond	14	365	1	27	85
Boone	13	104	17	129	50
Brown	0	0	3	272	14
Bureau	8	91	8	98	64
Calhoun	1	86	1	95	65
Carroll	13	324	9	248	17
Cass	5	145	7	207	24
Champaign	66	174	46	122	55
Christian	5	59	12	148	41
Clark	6	143	9	228	19
Clay	7	202	17	515	3
Clinton	11	125	9	110	61
Coles	21	202	26	263	15
Cook	1,085	78	745	54	81
Crawford	14	302	5	120	57
Cumberland	4	135	5	186	29
DeKalb	16	78	13	62	77
DeWitt	5	122	4	102	63
Douglas	4	75	6	116	59
DuPage	55	23	88	37	84
Edgar	8	172	13	305	12
Edwards	7	441	11	752	1
Effingham	17	175	17	187	28
Fayette	11	214	7	145	42
Ford	3	82	10	291	13
Franklin	25	281	16	183	30
Fulton	22	263	11	140	44
Gallatin	1	71	1	78	71
Greene	9	241	14	415	5
Grundy	2	20	9	91	66
Hamilton	6	294	10	544	2
Hancock	7	143	7	160	35
Hardin	2	206	4	449	4
Henderson	5	266	0	0	87
Henry	23	178	12	102	63
Iroquois	8	101	9	124	54
Jackson	6	52	7	64	75
Jasper	6	232	4	174	32
Jefferson	28	289	13	139	45
Jersey	12	220	3	59	79
JoDaviess	3	59	16	332	11
Johnson	4	170	2	85	69
Kane	129	104	97	70	72
Kankakee	68	242	31	110	61
Kendall	11	68	12	61	78
Knox	38	309	24	206	25
Lake	151	79	126	64	75
LaSalle	53	190	22	82	70
Lawrence	7	201	6	183	30
Lee	18	207	18	223	20

Table 11: Number of indicated cases of child sex abuse, FY00 – FY05

County	2000	Rate	2005	Rate	Rank
Livingston	36	364	20	215	21
Logan	17	251	8	125	53
McDonough	10	172	8	151	40
McHenry	56	71	52	63	76
McLean	60	169	37	102	63
Macon	29	103	37	138	46
Macoupin	21	175	15	135	48
Madison	107	166	57	91	66
Marion	49	461	22	223	20
Marshall	0	0	4	136	47
Mason	12	310	13	357	10
Massac	11	316	9	258	16
Menard	4	121	2	66	74
Mercer	7	167	1	26	86
Monroe	9	123	5	69	73
Montgomery	10	138	3	44	82
Morgan	8	96	12	153	39
Moultrie	10	273	4	115	60
Ogle	17	121	17	127	51
Peoria	99	214	47	103	62
Perry	6	118	19	395	8
Piatt	2	49	2	54	81
Pike	6	144	6	157	36
Pope	6	635	1	126	52
Pulaski	10	504	1	55	80
Putnam	2	132	3	213	22
Randolph	19	254	7	98	64
Richland	11	280	4	110	61
Rock Island	76	213	42	121	56
St. Clair	96	135	59	86	68
Saline	13	204	25	406	6
Sangamon	75	159	76	164	34
Schuyler	4	244	2	134	49
Scott	0	0	5	399	7
Shelby	10	176	6	117	58
Stark	5	318	3	210	23
Stephenson	8	64	22	191	27
Tazewell	45	144	33	110	61
Union	7	167	8	200	26
Vermilion	28	134	34	168	33
Wabash	14	449	5	177	31
Warren	12	277	1	26	86
Washington	1	26	4	115	60
Wayne	12	297	6	155	37
White	5	152	12	388	9
Whiteside	18	119	22	154	38
Will	80	52	70	40	83
Williamson	48	343	32	230	18
Winnebago	133	180	107	145	42
Woodford	10	106	13	143	43
Unknown/out-of-state			31		
Total	3,412	105	2,618	81	

Table 12: Number of reported crimes against youth, CY00 – CY05

Source: Illinois State Police

Age 10-17

Rate per 100,000 Persons in the General Population

County	2000	Rate	2005	Rate	Rank
Adams	140	205	39	58	41
Alexander	4	42	3	34	52
Bond	1	6	1	6	67
Boone	149	354	94	186	14
Brown	0	0	0	0	71
Bureau	83	234	2	6	67
Calhoun	0	0	0	0	71
Carroll	34	205	6	37	50
Cass	0	0	3	22	56
Champaign	746	415	901	487	6
Christian	10	28	11	31	53
Clark	1	6	2	12	64
Clay	1	7	3	21	57
Clinton	42	118	65	180	16
Coles	27	51	115	225	13
Cook	31,854	592	29,334	553	4
Crawford	87	426	75	377	9
Cumberland	6	53	9	82	32
DeKalb	193	216	115	118	25
DeWitt	1	6	1	6	67
Douglas	22	110	14	70	36
DuPage	684	75	493	53	45
Edgar	90	458	1	5	68
Edwards	0	0	0	0	71
Effingham	77	225	105	304	11
Fayette	55	252	36	166	17
Ford	4	28	12	85	31
Franklin	8	20	7	18	59
Fulton	36	94	13	34	52
Gallatin	0	0	1	16	60
Greene	6	41	8	55	44
Grundy	74	196	50	114	27
Hamilton	0	0	0	0	71
Hancock	5	25	3	16	60
Hardin	0	0	0	0	71
Henderson	0	0	0	0	71
Henry	150	294	253	500	5
Iroquois	1	3	5	16	60
Jackson	11	18	12	21	57
Jasper	6	60	8	80	34
Jefferson	33	82	19	47	46
Jersey	17	78	12	53	45
JoDaviess	14	63	5	22	56
Johnson	0	0	0	0	71
Kane	343	84	420	87	30
Kankakee	73	70	69	64	39
Kendall	110	199	80	101	28
Knox	44	79	85	159	18
Lake	497	77	485	69	37
LaSalle	50	45	64	57	42
Lawrence	2	13	3	19	58

Table 12: Number of reported crimes against youth, CY00 – CY05

County	2000	Rate	2005	Rate	Rank
Lee	8	22	11	31	53
Livingston	189	477	172	439	7
Logan	235	754	180	588	2
McDonough	4	12	1	3	70
McHenry	100	38	105	35	51
McLean	79	52	153	96	29
Macon	503	439	484	439	7
Macoupin	49	100	33	67	38
Madison	1,177	454	727	275	12
Marion	41	98	5	12	64
Marshall	24	183	1	8	66
Mason	34	212	29	184	15
Massac	32	212	13	85	31
Menard	3	24	6	47	46
Mercer	5	29	10	59	40
Monroe	8	29	3	10	65
Montgomery	53	173	23	76	35
Morgan	44	120	47	132	21
Moultrie	16	112	17	117	26
Ogle	114	223	65	120	24
Peoria	1,718	938	1,044	573	3
Perry	2	9	1	4	69
Piatt	20	122	20	120	24
Pike	1	6	2	12	64
Pope	2	45	0	0	71
Pulaski	7	96	1	15	61
Putnam	0	0	0	0	71
Randolph	8	24	15	45	47
Richland	2	12	0	0	71
Rock Island	340	228	120	81	33
St. Clair	595	232	483	186	14
Saline	80	300	36	138	19
Sangamon	336	178	1,164	604	1
Schuyler	9	125	1	14	62
Scott	0	0	0	0	71
Shelby	8	35	4	18	59
Stark	9	142	8	130	23
Stephenson	83	170	65	136	20
Tazewell	437	340	399	307	10
Union	3	16	4	22	56
Vermilion	214	255	347	421	8
Wabash	11	85	0	0	71
Warren	17	91	7	40	48
Washington	4	26	2	13	63
Wayne	28	163	4	24	54
White	28	182	20	131	22
Whiteside	26	43	23	38	49
Will	540	106	361	56	43
Williamson	131	214	75	118	25
Winnebago	50	18	65	23	55
Woodford	3	8	2	5	68
Total	43,221	347	39,400	309	

Table 13: Number of inmates admitted to IDOC with children, FY00 – FY04

Source: Illinois Department of Corrections

* 2005 IDOC data unavailable; FY04 data used

County	2000 # of Inmates with Children	2000 % of Inmates with Children	2004 # of Inmates with Children	2004 % of Inmates with Children
Adams	145	69.71%	168	64.62%
Alexander	13	54.17%	10	55.56%
Bond	12	50.00%	20	83.33%
Boone	6	10.17%	39	51.32%
Brown	4	66.67%	6	100.00%
Bureau	11	28.95%	37	60.66%
Calhoun	0	0.00%	4	57.14%
Carroll	10	30.30%	18	51.43%
Cass	19	59.38%	30	68.18%
Champaign	222	37.69%	437	66.62%
Christian	42	58.33%	73	64.04%
Clark	12	63.16%	45	62.50%
Clay	25	67.57%	31	64.58%
Clinton	33	61.11%	41	68.33%
Coles	60	65.22%	166	68.31%
Cook	7,327	44.96%	14,580	67.67%
Crawford	6	42.86%	47	64.38%
Cumberland	2	50.00%	26	74.29%
DeKalb	31	28.44%	67	58.26%
Dewitt	19	63.33%	12	54.55%
Douglas	11	52.38%	26	68.42%
DuPage	211	28.25%	606	54.64%
Edgar	28	59.57%	82	64.06%
Edwards	11	52.38%	11	57.89%
Effingham	27	67.50%	45	68.18%
Fayette	19	55.88%	42	58.33%
Ford	2	16.67%	12	70.59%
Franklin	15	39.47%	56	70.89%
Fulton	13	52.00%	47	52.81%
Gallatin	6	37.50%	7	70.00%
Greene	9	69.23%	13	52.00%
Grundy	11	37.93%	19	55.88%
Hamilton	3	75.00%	8	50.00%
Hancock	8	66.67%	20	50.00%
Hardin	3	37.50%	4	57.14%
Henderson	2	25.00%	7	43.75%
Henry	26	22.61%	61	46.21%
Iroquois	4	25.00%	24	48.98%
Jackson	50	61.73%	49	66.22%
Jasper	7	53.85%	6	54.55%
Jefferson	73	73.74%	74	54.81%
Jersey	13	65.00%	53	75.71%
Jo Daviess	4	22.22%	14	66.67%
Johnson	15	51.72%	36	63.16%
Kane	177	30.05%	477	61.63%
Kankakee	60	30.93%	278	67.97%
Kendall	32	38.55%	52	51.49%
Knox	48	44.04%	53	61.63%
Lake	293	30.55%	764	61.61%
Lasalle	60	27.52%	164	56.55%
Lawrence	23	63.89%	33	71.74%
Lee	13	25.00%	52	55.91%

Table 13: Number of inmates admitted to IDOC with children, FY00 – FY04

County	2000 # of Inmates with Children	2000 % of Inmates with Children	2004 # of Inmates with Children	2004 % of Inmates with Children
Livingston	20	32.26%	85	63.91%
Logan	42	62.69%	68	64.76%
McDonough	29	64.44%	24	57.14%
McHenry	34	19.88%	120	47.43%
McLean	169	38.24%	326	61.39%
Macon	458	62.57%	524	69.96%
Macoupin	36	57.14%	80	68.38%
Madison	304	64.82%	455	69.89%
Marion	104	61.18%	165	67.90%
Marshall	0	0.00%	3	50.00%
Mason	14	43.75%	28	59.57%
Massac	16	66.67%	32	80.00%
Menard	6	85.71%	16	66.67%
Mercer	4	21.05%	14	60.87%
Monroe	14	60.87%	21	65.63%
Montgomery	42	61.76%	79	65.83%
Morgan	45	66.18%	48	70.59%
Moultrie	15	60.00%	18	60.00%
Ogle	10	25.00%	25	48.08%
Peoria	165	40.64%	395	66.28%
Perry	25	60.98%	31	63.27%
Piatt	4	36.36%	4	40.00%
Pike	18	66.67%	39	67.24%
Pope	1	100.00%	4	80.00%
Pulaski	6	54.55%	10	52.63%
Putnam	0	0.00%	1	25.00%
Randolph	39	65.00%	49	64.47%
Richland	18	62.07%	32	53.33%
Rock Island	113	37.05%	208	64.80%
St. Clair	335	65.94%	428	70.05%
Saline	27	64.29%	80	62.50%
Sangamon	230	69.28%	364	70.68%
Schuyler	3	75.00%	7	70.00%
Scott	0	0.00%	1	100.00%
Shelby	21	60.00%	45	62.50%
Stark	1	25.00%	4	66.67%
Stephenson	58	35.15%	100	68.03%
Tazewell	32	22.22%	177	60.00%
Union	18	69.23%	24	61.54%
Vermilion	64	34.78%	163	66.53%
Wabash	14	51.85%	22	56.41%
Warren	5	17.24%	15	75.00%
Washington	15	50.00%	32	68.09%
Wayne	30	57.69%	63	73.26%
White	13	65.00%	72	72.73%
Whiteside	60	31.25%	159	63.60%
Will	146	28.68%	501	60.87%
Williamson	25	51.02%	61	58.65%
Winnebago	223	29.58%	626	66.03%
Woodford	4	10.26%	32	50.00%
Unknown	0	0.00%	9	69.23%
Total	12,351	44.07%	24,941	65.82%